

DRESSTA
TD-15M
CRAWLER DOZER

ENGINE:	Cummins QSL9.3 CN Tier 3	Cummins B 6.7 Stage V
POWER:	154 kW (206 HP) @ 1950 RPM	172 kW (230 HP) @ 2000 RPM
OPERATING WEIGHT:	18.9 t - 22.8 t	18.9 t - 22.8 t
BLADE CAPACITY:	4.5 - 5.6 m ³	4.5 - 5.6 m ³

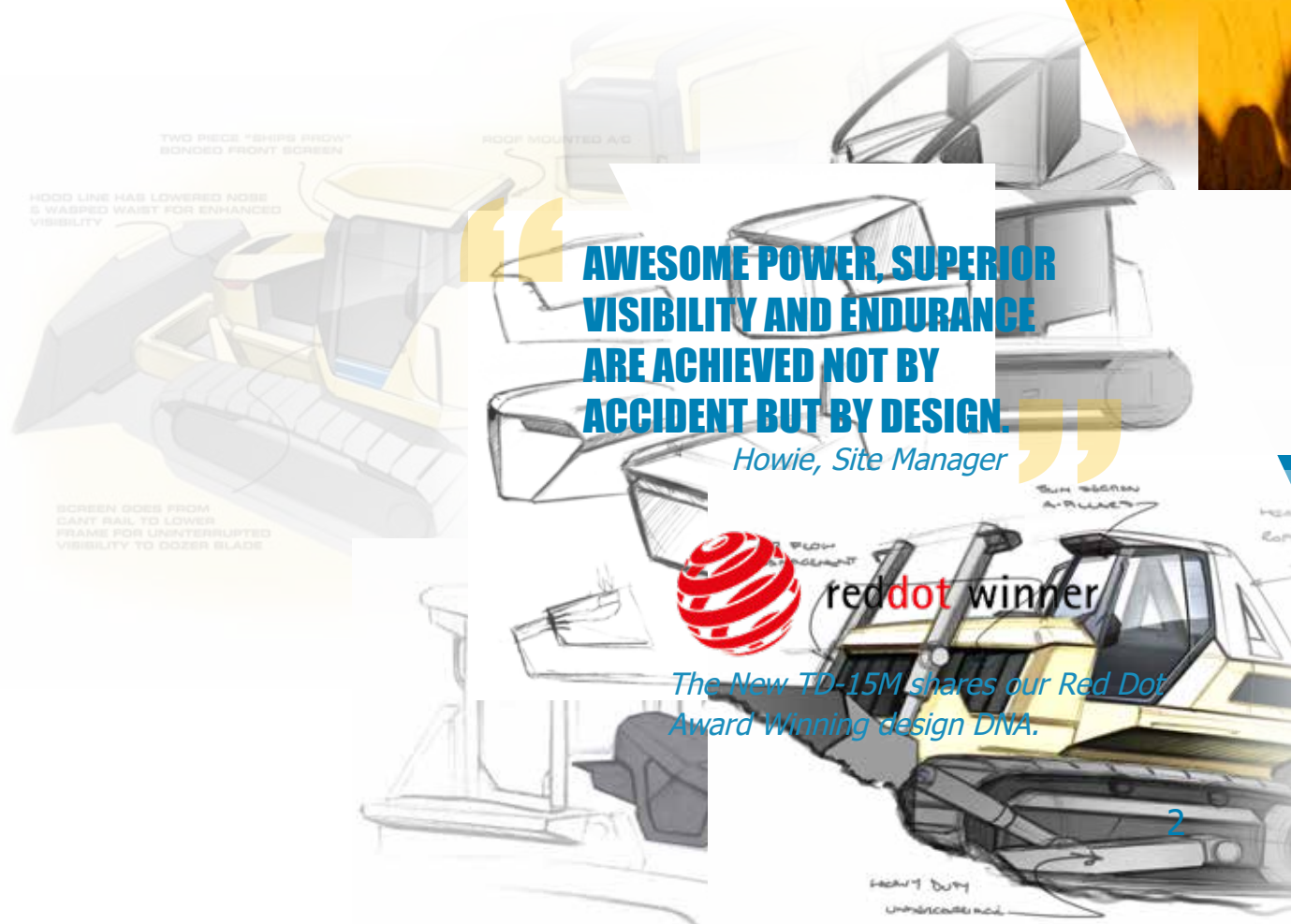


THE OPERATOR'S EXPERIENCE IS CENTRAL TO OUR DESIGN APPROACH

When we design a machine, we start with the operator and design everything around them. When the operator can see more, they can do more in safety. That's why Dressta machines are the benchmark for visibility of the blade, ripper, tracks, and jobsite.

We use our engineering capability to deliver the maximum pushing power with machines that just keep on working. In our tough applications endurance is the key and we have machines that are still working and earning

Z L W K \ H D U V I W R X J K V H U Y L F H L Q W K H and endurance in action.



AWESOME POWER, SUPERIOR VISIBILITY AND ENDURANCE ARE ACHIEVED NOT BY ACCIDENT BUT BY DESIGN.

Howie, Site Manager

The New TD-15M shares our Red Dot Award Winning design DNA.



DESIGN

POWER

VISIBILITY

ENDURANCE

BUILT WITH THE BEST OPERATORS IN MIND

PANORAMIC VISIBILITY

33% more glass surface area, a tapered engine hood presenting clear sightlines to the blade corners, an optional rear-view camera, and additional blade lighting, you've got the job site covered from every angle.

1.

AWESOME ATTACHMENTS

Semi-U, Straight and 6-way with optional foldable version; whatever blade you need, we've got it. When it comes to rippers, no-one gives you greater choice.

- 6-way 5.2 m3
- 6-way - folding 5.2 m3
- Semi-U 5.6 m3
- Straight 4.5 m3

2.

SERIOUS PUSHING POWER

With 230 HP and 1044 Nm torque

530 I X H O

Cummins engine delivers an 308/417 kN drawbar pull.

3.

ULTRA QUIET CAB

With a low noise, low vibration, ultra-quiet cab, we've created the perfect working environment.

4.

UNDERCARRIAGE FLEXIBILITY

Interchangeable track shoes

D U H D Y D L O D E O H L Q

ranging from 510 mm (20 in) to 1100 mm (43 in). In addition, we

R H U V H O I F O H D Q L Q J

applications.

5.

PERFECT POWER TURNS

2-speed steering drive maximises productivity by delivering 100% of the engine's power to both tracks, allowing you to push a full load through turns with near perfect load retention.

6.

HIGHER UPTIME LOWER COST

Modular component layout with safe, easy access to maintenance points. Lifetime lubricated rollers, heavy duty chains and idlers for extended track life all combine to reduce maintenance costs.

7.



ULTIMATE IN BLADE CONTROL

control. Electro-hydraulically controlled proportional joysticks deliver a new level of blade control and accuracy.

8.

SELECT AND GO

Choose from three selectable drive and attachment modes.

9.



THAT'S THE PREVIEW æ **LET'S POWER ON INTO THE DETAIL.**

SUPERIOR POWER AND PERFORMANCE

: L W K G R J L Q J S R Z H U D V
to cut dirt.

\$ W L W V K H D U W E H D W V D
Cummins Stage V engine delivering 172 kw (230 HP)
and 1044 Nm torque @ 1500 RPM, resulting
in a 308/417 kN drawbar pull. This perfectly engineered
power to weight ratio delivers awesome pushing power
with surprisingly low noise and vibrations.

In addition, our new, variable hydraulic system reduces fuel
consumption by 5%



**STAGE V CUMMINS ENGINE 5%
REDUCTION IN FUEL CONSUMPTION**



**PERFECT POWER
TO WEIGHT RATIO**



**LOW NOISE AND
VIBRATIONS**

• \$: (6 2 0 (3 2 : (5 £ 2 1 ' (0 \$
IT'S JUST WHAT YOU WANT!"

- D F N ' R J H U 2 S H U D W R U





HIGHER PRODUCTIVITY MADE EASY

With a choice of two pre-set modes, we make it easy to save fuel and keep fresh and focused by reducing repetitive gear changing.

Mode 1 is perfect for achieving faster cycle times in
W R X J K G R J L Q J F R Q G L W L R Q V X
and second gear reverse.

Mode 2 L V L G H D O I R U O L J K W H U Z
directions. Simply choose the mode to match your task and let
the machine do the rest

8 / 7 5
NOISE CAB


2
SELECTABLE DRIVE & ATTACHMENT MODES


/ \$ 5 * (7 2 8 * + £ 6


*
AIR SUSPENSION SEAT & ERGONOMIC CONTROLS


· ,) , 7 0 \$. (6 0 < / ,) ((\$ 6 , (

I'M A FAN!
 Thomas, Key Account Manager

SUPERIOR VISIBILITY FROM EVERY ANGLE

Visibility is one of our core values and is key to operator safety and productivity - the more you see the more you can do in safety.

With 33% more glass surface area, a tapered engine hood presenting clear sightlines to the blade corners, a rear-view camera, and additional ripper lighting, it's

round visibility.

But there's more: we've lowered the side window position to improve visibility of tracks and the working area too.

No matter which way you look, when it comes to improved visibility, you've got the jobsite covered from every angle.



33% MORE GLASS



/ , * + 7 , 1 *

5 (\$ 5 £ 9 , (: &



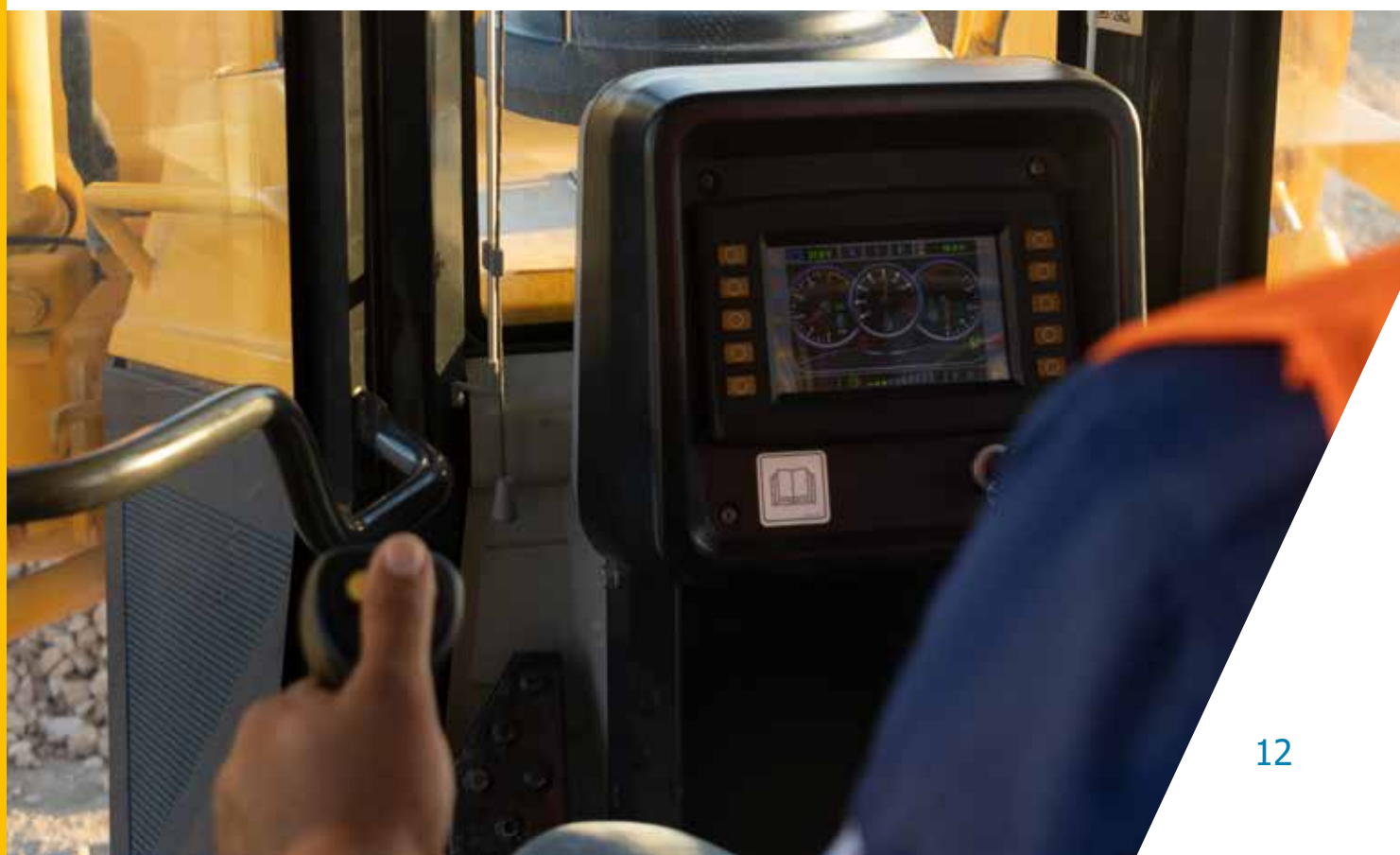
**CLEAR VIEW OF THE BLADE,
RIPPER & JOBSITE**

"YOU CAN STILL FEEL THE BLADE ACTION

æ % 8 7 1 2 : < 2 8 & \$ 1
Nick, Product Manager

6 ((, 7





THE BENCHMARK FOR CONTROL AND CONNECTIVITY

When it comes to sensitive control, the TD-15M puts the power in your hands. Unrivalled blade and ripper performance is delivered by Rexroth's world-class electro-hydraulic valve control, Intelligent blade speed mode (Slow, Neutral, Fast) and highly engineered, 6-way blade and 3-shank ripper.

Compatible with world leading machine control connectivity solutions from Leica, Topcon, and Trimble, the TD-15M delivers fewer passes, higher fuel economy, lower fatigue and greater job satisfaction for the operator.
Job done!

**INTELLIGENT
BLADE SPEED MODE**



REXROTH HYDRAULICS



**LEICA, TRIMBLE,
AND TOPCON READY**



HYDRAULIC CONTROLS



**“THIS PROVES THAT TOUGH
MACHINES CAN BE INTELLIGENT TOO”**

Peter, Technical Trainer